



USER MANUAL DISTELL MEAT FATMETER

Model MFM-992 (small sensor)
Model MFM-1092 (large sensor)





LAB Online Exhibition



distell-ing. pres.part. verb. 1. to distell. 2. to rapidly analyse fat content of food products using microwave technology.

Contents

Introduction.....	5
<i>General description.....</i>	5
<i>Principle of operation.....</i>	5
<i>Fatmeter update.....</i>	5
<i>Accuracy of results.....</i>	6
<i>Accuracy guide.....</i>	6
MFM-1092.....	6
MFM-992.....	6
<i>Technical data.....</i>	6
Step-by-step guide.....	7
<i>The Fatmeter kit.....</i>	7
<i>Meter unit – Front view.....</i>	7
Data / power Socket.....	7
Microstrip sensor.....	7
<i>Meter unit – Back view.....</i>	8
Read button (Yes).....	8
Reset button (No).....	8
<i>Power supply / charger.....</i>	8
<i>Check pad.....</i>	8
<i>Data cable.....</i>	9
<i>CD-ROM.....</i>	9
<i>User manuals & calibration charts.....</i>	9
<i>Carry case.....</i>	9
Getting started.....	10
<i>Switch on.....</i>	10
<i>Check pad test.....</i>	10
Failed check pad test.....	10
<i>Ready to start.....</i>	11
<i>Measuring product samples.....</i>	11
<i>Comparing the meter with laboratory analysis.....</i>	11
Preparing laboratory samples.....	12
Laboratory checklist.....	12
If the results do not compare favourably.....	12
<i>Menu structure.....</i>	13
Product menu.....	13
Research menu.....	13
Samples menu.....	14
Download menu.....	14
Add Product option.....	14
Date & Time menu.....	15
Rental Key option.....	15
Send Ref option.....	15
Clear option.....	16
Data Management System.....	17
<i>Installation.....</i>	17
Requirements.....	17
Installing the DMS.....	17
<i>Running the DMS.....</i>	17
<i>Historical data download.....</i>	17
Step 1: Connecting the Meter.....	17
Step 2: Configure the DMS.....	17
Step 3: Initiate the download from the meter.....	18

<i>Real time data download</i>	18
Enabling real-time data download.....	19
<i>Annotating the data</i>	19
<i>DMS data files</i>	19
<i>Printing data</i>	19
<i>Exporting data</i>	19
<i>Data Management Software help</i>	19
<i>Advanced topics</i>	19
Hints and suggestions	20
<i>Preparation of samples</i>	20
<i>Operation of the Fatmeter</i>	20
<i>Cleaning and general care</i>	20
<i>Before calling for service</i>	21
<i>Warranty and repair</i>	21
Contact details	22

Introduction

General description

THE DISTELL FATMETER was developed in response to demand from various customers for a meter that could measure lipid content of fish, meat and poultry products simply, and non-destructively. The hand held instrument is placed in contact with the sample and the fat/oil content is displayed on the instrument's digital readout, providing instant processing or quality control information. The value is also stored in memory for later downloading to computer. These features are invaluable for organisations requiring collation and reporting information, especially where HACCP and TQM regimes are in force.

There are calibrations available for a large number of fish and meats of commercial importance. There is also the option of having Distell prepare a specific calibration of your choice, where required.

The instrument is non-destructive and non-invasive in use, and for this reason can be used equally well on whole pieces of meat, or minced meat products, small live animals and live or dead fish.

Please note however, that the instrument cannot measure samples that are frozen, and it is necessary to fully defrost such samples before measurement.

Principle of operation

The lipid content of naturally occurring meat is related to the water content, and the measurement of one can serve to determine the other if the relationship is known. The Meat Fatmeter utilises this fact in establishing the fat content.

The instrument uses a microstrip sensor which is sensitive to the water content of the sample. Using stored calibration data the instrument converts the response of the sensor to a percentage fat/oil content that is shown on the meter's display.

The principles of the method were defined after a number of years of research and development conducted by the Torry Research Station (TRS) of the UK's Ministry of Agriculture, Fisheries and Food (MAFF) in Aberdeen, Scotland. Calibrations were obtained using a wide range of meat products. Results of this work and other related research have been published in the scientific and technical press by staff of TRS.

This instrument has been further developed by Distell. The Fatmeter is covered by various patents in several countries.

Fatmeter update

The first Fatmeter models were supplied to customers within the fish and meat industry in July 1992. Since then the Meat Fatmeter has become universally known and is in use throughout the world. Distell has received invaluable feedback from customers about the use of the Fatmeter in the field. This allows us to constantly improve and refine the Fatmeter and to give you hints and tips on its use.

Also, we received numerous enquiries regarding the operation and accuracy of the Fatmeter, and how the results compare with the current, historical methods used in industry.

It would seem that the sampling and analysis procedures are far from standardised and varies from country to country, and even from company to company within these countries. Even where the same laboratory equipment is used, there are different sampling techniques apparent, which seems to give varying results.

This manual should be treated as a guide. It is not fully comprehensive, but is provided simply to help you understand the Fatmeter, how it operates, and how to eliminate factors that may affect your

results. If, having read this manual, you still have a query or a problem then please do not hesitate to contact our customer services department at the address shown at the end of this manual.

Accuracy of results

The accuracy of the Fatmeter depends upon the fat/oil content of the sample being measured and ranges from an uncertainty in the fat content of $\pm 1\%$ (95% confidence interval) at low levels to $\pm 4\%$ at very high levels (greater than 45%).

Therefore it is advisable that the operator follows the measurement methodology rigorously, and always takes readings as described in wall charts supplied.

Accuracy guide

The MFM-1092 (large sensor) Fatmeter benefits from better representational accuracy than the more compact MFM-992 (small sensor) Fatmeter. The accuracy of the meters is shown below:

MFM-1092

Fat/Oil Reading	Accuracy	
2 to 15%	from $\pm 0.5\%$, rising to $\pm 1.0\%$	(13-15% at 14%)
16 to 30%	from $\pm 1.0\%$, rising to $\pm 2.0\%$	(28-32% at 30%)
31% and above	from $\pm 2.0\%$, rising to $\pm 4.0\%$	(46-54% at 50%)

MFM-992

Fat/Oil Reading	Accuracy	
2 to 15%	from $\pm 1.0\%$, rising to $\pm 1.5\%$	(12.5-15.5% at 14%)
16 to 30%	from $\pm 1.5\%$, rising to $\pm 2.5\%$	(27.5-32.5% at 30%)
31% and above	from $\pm 2.5\%$, rising to $\pm 4.0\%$	(46-54% at 50%)

The results achieved will allow the operator to take swift decisions regarding the processing of the meat product being measured.

Technical data

This User Manual does not cover the technical side of the Fatmeter in great depth. You can find a copy of our Technical Manual on the CD-ROM that is supplied with the meter, or you can download a copy from our website. This will help you explore the technical aspects of the Fatmeter's operation, as well as how to create custom calibrations.

Step-by-step guide

The Fatmeter kit

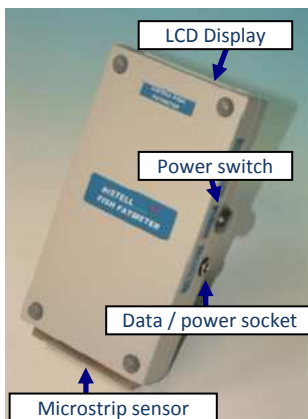
Your Fatmeter kit comprises the following items:

- Meter unit
- Power supply / charger
- Check pad
- USB data cable
- CD-ROM
- User manuals and Calibration charts
- Carry case



Please take good care of the meter. It is a measurement instrument and should be handled carefully. The meter should be cleaned and stored in its case after use.

Meter unit – Front view



Data / power Socket

The 7-way socket on the side of the meter serves three functions:

- Data download socket, for transferring data to PC, using cable supplied.
- Allows the meter to run on external power
- Used for charging internal batteries

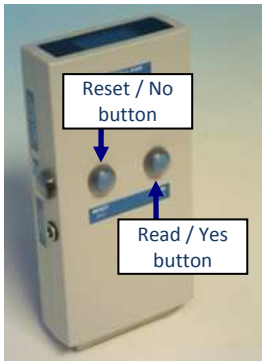
Microstrip sensor

The microstrip sensor is placed in contact with the sample product in order to take measurements.

Important note: Please ensure that the sensor is protected. It is sealed with a PTFE film which must be intact for reliable operation. Do not attempt to remove this film. If this film is damaged then the meter should be returned to Distell for service and repair.

Note: the photograph above shows the MFM-1092 model, where the power switch and the data / power socket are on the same side. On the MFM-992 model these are on opposite sides, but their function is identical.

Meter unit – Back view



Read button (Yes)

- Press and hold this button to take a reading;
- Press to answer 'Yes' to any Yes / No question on the display.

Reset button (No)

- Press to reset the measurement routine, or to abort an incomplete series of readings;
- Press to answer 'No' to any Yes / No question on the display.

Power supply / charger

Only the unit supplied with your kit should be used to charge the battery pack, or power the meter.

This is connected to the 7-way outlet on the meter. The charger supply unit simply plugs into the mains socket, accepting input mains voltage from 110v–240v AC, 50–60 Hz. The charger unit comes complete with various plug configurations for use around the world.

A red LED will illuminate when charger / power supply is switched on. The battery pack should be fully charged after a period of 12 hours. When charging is complete, first disconnect the charger from the mains and then from the meter.

The power supply / charger can also be used to power the meter during use while also charging the internal batteries at a reduced rate.



Check pad

All scientific instruments need regular calibration. In the case of the Fatmeter an annual calibration is recommended. Where the meter is subject to intensive use, a twice yearly calibration check is recommended.

So that you can be sure that the meter is operating to specifications, it is always best to take measurements on the check pad prior to commencing work. The check pad provides the user with a quick daily check that the calibration has not changed significantly since last calibration. It should be noted, however, that the results obtained do not verify your meter's precise calibration, but they do give an assurance that there has been no significant change.

The pad has two rectangular slots which provide a representative reading of the high and low range of a stated species selection. A series of eight readings should be taken in each of these slots (firm pressure should be applied). The average readings obtained should fall within $\pm 2\%$ of the values stated on the pad.

Because of the compressible nature of the pad, different operators may obtain slightly different results on the check pad, using the same instrument. It is therefore recommended that one person be made responsible for this daily check, so that consistent daily checks are carried out.

Data cable

Always use the data cable supplied for downloading to computer. Connect the 7-way plug to outlet on meter and the other end directly into a USB port on your computer.

CD-ROM

The CD contains the user manuals, Data Management System, calibration charts, and other useful information.

User manuals & calibration charts

A hard copy of the user manual, calibration charts and the calibration certificate is included.

Carry case

The Fatmeter kit is supplied in a robust carry case, and comes complete with 2 keys for security of your Fatmeter.

Getting started

Verify that battery has been charged.

Switch on

Switch on the Meter and allow the meter to cycle through its start up procedure.

Part of the start up procedure is to show how many readings are currently stored in the meter. You may wish to download and erase any stored readings before taking new measurements. You can find out about the download procedure in the 'Data Management System' section.

The Fatmeter should be switched on for five minutes before taking measurements, in order to allow the sensor electronics to stabilise. This should be done before the check pad test is done.

Check pad test

It is recommended to test the Fatmeter against its check pad every day. The Fatmeter will prompt the user to verify the meter against the check pad shortly after start up, but please note the recommendation to allow a five minute warm up / stabilisation period after turning the meter on.

The check pad test involves continually taking readings and displaying the RESEARCH-1 value for the reading. It does this regardless of which calibration setting has been selected. You will see something like the following on the display:



The value shown will change according to what is being measured. Place the meter firmly on the check pad with the sensor making good contact on the pad's test area, then verify that the value displayed on the meter is within the range shown on the pad. Repeat this on the other side of the pad. If the values on the meter are not within the range shown on the pad, re-try the test while making sure that the meter is properly positioned and not at an angle.

Once the meter has been verified against the check pad press either of the buttons to continue. You can proceed to take measurements on your daily product samples.

Failed check pad test

If the Fatmeter displays values that are not within the tolerance shown on the check pad then something has changed from the last test. Possible areas for error include:

- Inexperienced operator carrying out the checks;
- Sensor not properly located in aperture, thus not in contact with the pad.

If the checks using the check pad have been carried out correctly then we must suspect that the calibration in the Fatmeter has somehow changed. There are three options at this point:

- Carry out a check in Iso-Propanol Solutions, and verify that the fatmeter results agree with calibration table supplied on the rear of your calibration certificate;
- If this check is OK, then the pad itself must be faulty. A faulty check pad is, however, very rare.
- If this check confirms that the Fatmeter has drifted out of calibration then please contact Distell to arrange for the Fatmeter to be returned for service and re-calibration.

If in doubt, please contact Distell for advice. We will talk you through the check procedure, and advise accordingly.

Ready to start

When the meter is ready for use the display will show the last calibration setting used, and will look something like the example below:

Calibration Setting		
Y	BEEF-1 SN=8	N
Yes	Number of samples used to calculate average	No

Measuring product samples

It is extremely important to follow the instructions on the calibration chart supplied for the meat product you are measuring. The checklist before sampling is as follows:

- You have chosen the correct meat calibration.
- You have checked to ensure that the meat product is indeed a natural meat product, free of additives and other additions.
- Select 300g of minced meat product.
- For best accuracy always follow the measurement recommendations on your calibration chart.
- Temperature of the meat product to be measured should be between 0 and 10°C, with no ice crystals present in the samples.
- Ensure that the sample has no air cavities within the sample by hand pressing the sample into a patty or sausage shape.
- Ensure that the sensor is placed firmly against the product, thus ensuring that there are no air pockets between the sensor and the sample to be measured.
- It is normal to experience substantial variability in the individual readings, especially with a coarse minced product. For this reason, the meter will take multiple samples and then average them to produce a final value. Note that this can provide a useful measure of product uniformity.

For the most accurate results, be sure to follow the procedure detailed on the calibration chart. This includes (a) the number of readings to take, (b) the sample preparation method and (c) the locations to take the measurements. If followed correctly, the meter will give a fat percentage that represents the fat content of the meat product.

Normally eight readings should be taken but this should be confirmed by checking the calibration chart. You can change the number of readings that the meter will take before averaging by using the 'Samples' menu option. See the 'Menu structure' section for more details.

The Fatmeter can store up to 1000 sets of readings. These can be downloaded to a PC running the Data Management System. See the 'Data Management System' section for more information on how to do this. There is also an option to download the data in real time, i.e. as the readings are taken, and this is covered in the same section.

Comparing the meter with laboratory analysis

Sometimes, especially in a research environment, you may wish to compare the Fatmeter results with data obtained from laboratory analysis. This section will help to ensure that the correct laboratory process is followed so that the two sets of results can be compared.

Preparing laboratory samples

It is important that *all* of the 300g sample is packaged and sent to the laboratory for the analysis. Consult the laboratory analysis procedure on the relevant calibration chart for details.

The sample should be stored in a sealed polythene bag immediately after measurement. This will ensure that the product sample does not lose any moisture before analysis.

Laboratory checklist

- All of the 300g sample should be received at the laboratory, properly packed and sealed.
- The whole sample should be blended in order to create a homogeneous mix, ensuring that any fluids are included in the blend.
- The laboratory personnel must take three samples of product from different parts of the blend for the chemical analysis. This will confirm the homogeneity obtained by the blending process.
- The average of the laboratory triplicate analysis should be compared with the triplicate readings taken using the Fatmeter.
- The results should be compared with consideration to the accuracy claims presented at the beginning of this user manual.

If the results do not compare favourably

Check the Fatmeter use, as follows:

- Has the correct calibration been used on the Fatmeter?
- Has the Fatmeter been checked on the check pad?
- Is the operator proficient in the use of the Fatmeter?
- Is the product sample truly within the specification of the Fatmeter calibration being used?
- Check the product for uniformity, grind size, and preparation.

Check the laboratory procedure as follows:

- Analytical method being used
- Sample preparation is OK
- Three samples from different parts of the 300g blend have been analysed

This is just a short check list on how to use and compare the Fatmeter with other methods.

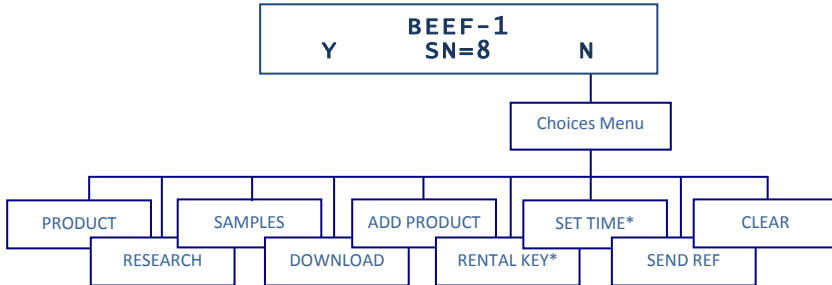
Remember that the primary purpose of using the Meat Fatmeter is to screen a lot of product for uniformity and specification.

During the production process, finite accuracy is not the objective. The objective is to try to ensure that the bulk of the day's production is within specifications time after time.

If, after these checks, there is still a significant difference please contact Distell for advice and help.

Menu structure

When the standard measurement display is shown (see the example at the start of this chapter) you can access the menu by pressing the **Reset / No** button. The Choices menu screen will appear in the order shown below. There are six options. Cycle through the options by pressing **Reset / No** until the correct one is displayed then press **Read / Yes**.



* Only one of the SET TIME and RENTAL KEY options will be available.

Product menu

In the Product menu you can choose which of the product calibration settings you wish to use. Simply choose the calibration that corresponds with the type of meat product that you wish to analyse. The detail of each product calibration setting is shown on the associated calibration chart.



Note: You can have up to 48 different calibrations programmed into your Fatmeter

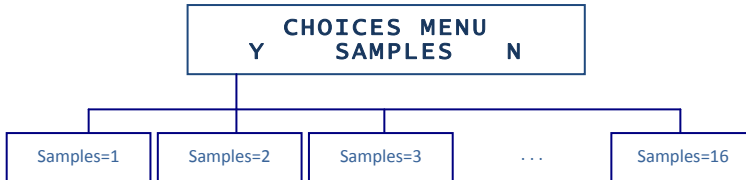
Research menu

In the Research menu you can choose which of the research calibration settings you wish to use. The Fatmeter is normally supplied with the RESEARCH-1 setting but additional calibrations can be added to the research block via the Custom Calibration process. Full details are available in our Technical Guide, which is available on the CD-ROM and from our website.



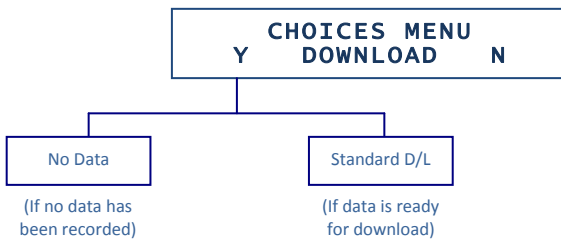
Samples menu

Our calibration charts are designed around using 8 samples for each set of readings. Using 8 samples offers the best balance of accuracy and rapid measurement performance, but you can choose between 1 and 16 samples here.



Download menu

The Download menu allows you to send any stored sample data to a connected PC running the Data Management System. The DMS is documented later in this guide, and the download procedure is covered there.



Add Product option

Using this menu provides the ability to programme the meter with additional calibrations. This facility is especially useful for those who wish to refine existing meter calibrations or create a new calibration setting based on their own data.

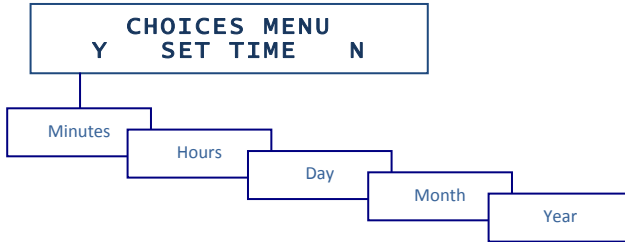
Full instructions on how to use this facility are in the Technical Manual, available on the CD-ROM and from the Distell website.



Date & Time menu

You should check the date and time when you first receive the meter, and update it if necessary. Each sample that is recorded by the meter has a date and time stamp, so it is recommended that the date and time be kept accurate. This will then ensure that all downloads reflect the correct date and time.

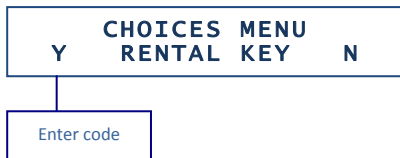
Note that if a meter is configured as a rental meter then this option will not be available.



Rental Key option

If your meter has been supplied as part of a rental agreement then the Rental Key menu option will be available. This allows you to enter a sequence of eight numbers and letters that is specific to your meter, and is used to change your rental settings, e.g. change the rental expiry date.

You can read more about rental keys at <http://www.distell.com/downloads/rentalkey.pdf>.



Send Ref option

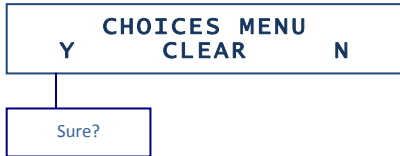
This option is used by the Custom Calibration process to copy the meter's built-in RESEARCH-1 calibration setting to the Data Management System. This data is used as a reference to construct a custom calibration.

You can read more about this in the Technical Manual available on the CD or on the Distell website.



Clear option

This menu option allows the user to clear any stored readings from the meter. Normally this is not required because stored readings can be cleared after being downloaded to the Data Management System. Some users, however, may use the meter purely for instant measurements without ever downloading the samples and, in time, the Fatmeter's storage capacity will fill up and 'MEMORY FULL' messages will be displayed. In these circumstances this menu option can be used to erase the samples and avoid the 'MEMORY FULL' message being displayed.



Data Management System

Installation

Requirements

The Data Management System, referred to as the 'DMS', requires a PC running Windows XP or later and a free USB socket for data downloads.

Installing the DMS

This section tells you how to install the program on your system and how to run the program.

It is best to close all programs before installing the software. You should have at least 5 Mb of hard disk space available for the installation.

- Insert the CD in the computer;
- Find the 'Installation files' folder on the CD then open the 'Data Management Software (DMS)' folder;
- Run the *DMSInstaller.exe* file and follow the prompts to complete the installation

Running the DMS

Click the Windows Start button on your desktop, select programs, select Distell then locate the DMS icon from the files listed there.

You can use the program straight away after installation. The program enables you to download, print, save, and export data, quickly and efficiently. The DMS also allows you to create and upload your own custom calibrations to the Fatmeter (see the Technical Manual on the CD-ROM and on the Distell website). All program functions are accessed using the menu and toolbar options. There is a comprehensive on-line help facility, which is available by clicking on the Help menu option.

Historical data download

This function enables you to download readings that are stored in the Fatmeter.

The data includes the date and time of the sample, the calibration setting that was used, the number and values of the individual samples taken, and the average value of the samples.

To illustrate the procedure, we'll assume that you have taken some sample readings with the Fatmeter and are ready to download them to your PC.

Step 1: Connecting the Meter

Connect the meter to a USB port on your PC, using the data cable supplied with the meter, then turn the meter on. When the cable is connected the USB driver software installed on the PC will create one or two 'virtual serial ports'. Normally these are COM3 / COM4, but this may change if you have other USB virtual serial devices installed. Your computer will normally reserve COM1 and COM2 for built-in hardware, or for legacy purposes

Step 2: Configure the DMS

Start the DMS then use the Preferences option under the Edit menu to select the COM port to use. If the USB driver created COM3 and COM4 then you would choose COM4 here. In general you should always select the virtual COM port with the higher number. If you see an error message when you

select the COM port then ensure that the meter is connected properly and turned on. If it is, try selecting a different COM port.

Once you have connected the meter and selected the correct communication port, select Download Historical Data from the Download menu. The DMS will now monitor the COM port for incoming data from the meter.

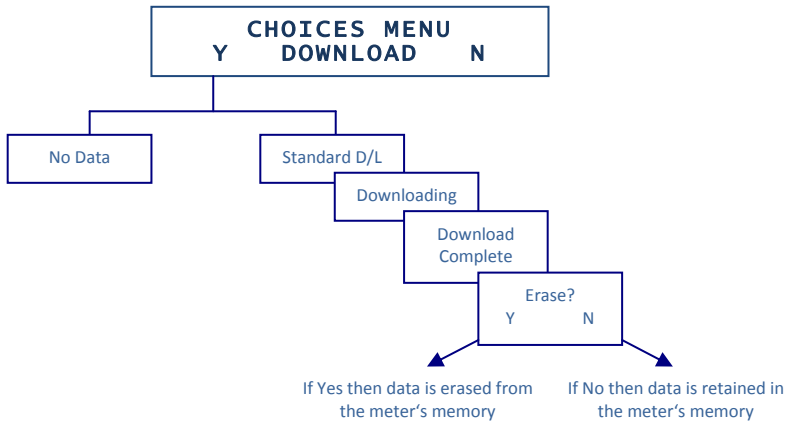
Step 3: Initiate the download from the meter

Once the DMS is ready and waiting for data, the meter needs to be told to begin the download.

Find the 'Download' option in the choices menu (see 'Menu structure'). At the 'Standard D/L' option, press the **Read / Yes** button then look for the data arriving at the DMS.

If no data is seen at the DMS then you may have selected the wrong COM port. Go back to step 2 and try an alternative port.

Once the data has been safely downloaded then you can, if you wish, erase the data from the meter. You can, alternatively, allow data to build up in the meter up to the maximum 1000 readings. If you wish to clear the data from the meter at a later stage then you can use the Clear option from the Choices menu.



When the data has been successfully downloaded, it will appear in the DMS in a spreadsheet / grid form. With the data in the DMS you can now:

- Print the data
- Add extra columns of information
- Save the data in native form as an .FMD file.
- Export the data as a Comma Separated Value (.CSV) file for exporting into other applications such as Excel, Access, etc.

Real time data download

You can use this function to download data in real time, sample by sample, each time that an average reading is created by the meter. The real time data will appear on screen line by line as you use the meter.

The purpose of the real time facility is to allow the user to see sample data instantaneously, as the readings are taken. Each time that an average reading is generated by the meter, it downloads the sample data via the USB communications port.

There is no specific process in the meter to download data in real time; the samples are automatically sent to the PC as they are taken.

Enabling real-time data download

Connect the meter to the PC and start the DMS, as described in steps 1 and 2 of 'Historical data download', above, then select 'Real-time download' from the Download menu.

Data will now appear in the DMS once the average reading has been recorded in the meter.

Annotating the data

The DMS presents the data in a grid with one row for each set of samples. You can add extra columns to the grid using the 'Add a new column' option of the Edit menu, and use that column to add notes about any given sample. Extra columns can also be deleted using the 'Delete column' option of the Edit menu.

DMS data files

Like most applications, the DMS can save data to a file on disk and load it back in again. Data is stored in a proprietary format in files with a .FMD extension. The Open and Save options under the File menu are used to load and save these data files.

Printing data

The DMS can print a report of the data for audit purposes. The Print option is under the File menu.

Exporting data

The DMS was never intended to be an analysis tool. Instead, you can export the data to a Comma Separated Value file (.CSV) for use within a spreadsheet or database. To export the data, select Save As... under the File menu, then select 'CSV files (*.CSV)' in the 'Save as type' option.

Data Management Software help

The DMS program provides an On-Line Help Facility. This can be accessed at any time when using the software program.

Advanced topics

The DMS has the capability to create custom calibrations and to upload those calibrations to the meter. These are areas that are not expected to be of interest to most users, so they are not documented here. You can, however, read more about them in our Technical Manual, which is available on the CD-ROM or can be downloaded from the Distell website.

Hints and suggestions

Preparation of samples

Always ensure that the sample for measurement is wider than the sensor and that it has a minimum thickness of 25mm. This ensures that there are no reflections from the underlying surface, which could result in spurious readings. Be particularly careful when the sample is on a metal surface, as this will increase the risk of the reflected signal interfering with the readings.

Ensure that the product for measurement is fully defrosted, and prepared in accordance with instructions.

Operation of the Fatmeter

The meter operator should check the stability of the calibration settings of the Fatmeter each day on the check pad supplied before general use.

The Fatmeter should be switched on 5 minutes prior to use, to allow the meter to stabilise. Ensure that you have chosen the correct calibration setting for the product to be measured.

Ensure that measurements are taken in a consistent and repeatable manner.

Ensure that the sensor head is firmly in contact with the product. We suggest that the meter is held in a vertical position. If the meter is tilted backwards or forwards then a different section of the product is being read, and this can affect repeatability of the measurements.

After pressing the **Read / Yes** button, always allow the reading to stabilise before releasing the button. The reading is only stored by the meter upon release of the button. Once the reading is stable, be sure to release the button *before* removing the meter from the sample.

If the displayed reading takes a long time to settle then this is a good indication that there are pockets of air in the sample. Try pressing the meter further into the product to expel any air, but ensure that the product thickness is still at least 25mm.

If the meter displays Out Of Range, possible causes could be:

- You have chosen the wrong calibration setting.
- The fat specification of the product is beyond the 'range of experience' set for this product.
- There are large air pockets or cavities located in the product directly beneath the sensor.
- The product thickness is insufficient.

When 'Battery Low' is shown on the display, or the display becomes very faint, the battery needs recharging.

Cleaning and general care

The Fatmeter is a sealed unit and is waterproofed to IP 67 prior to leaving the factory. However, we do not recommend that the unit be immersed in water or any other fluid. Tampering with the unit, opening the seals, etc., will immediately invalidate the warranty.

Your Fatmeter is encased in impact resistant plastic, with the sensor head made from stainless steel and PTFE. Take care not to pierce the PTFE film – i.e. avoid placing the sensor head-on to abrasive or rough surfaces. The unit may be cleaned with a damp cloth, using a mild solution of detergent. Be aware that some household cleaners may contain chemicals which could seriously damage the plastic enclosure. Avoid the use of any petroleum based solvent cleaners.

The unit should be charged regularly. Where the unit is in constant use, we recommend that the power supply be connected to the meter when at all possible. This will ensure that you have a fully charged battery available when necessary.

Your Distell Fatmeter is a precision instrument. Ensure that the unit is stored securely in transit. Do not drop or otherwise misuse the equipment, as this may invalidate the warranty.

Before calling for service

Should you have reason to believe that a fault has occurred, please first of all check the obvious:

- Is the unit switched on?
- Have the batteries been charged?

Should any fault persist, please telephone our Help Desk for advice and/or to report the fault.

Warranty and repair

Your Distell Fatmeter is fully warranted against manufacturing defect for a period of 12 months. Please refer to Warranty Terms and Conditions.

Should you have occasion to return the unit for repair, please telephone our Help Desk, report the fault and ask for advice.

Please quote date of purchase and give a full description of the fault.

Contact details

The

DISTELL MEAT FATMETER

is manufactured in the UK by

DISTELL.COM

UNIT 5, OLD LEVENSEAT

FAULDHOUSE

WEST LOTHIAN

EH47 9AD

SCOTLAND

TELEPHONE: +44 (0)1501 770124

FAX: +44 (0)1501 772424

WEBSITE : www.distell.com

EMAIL: info@distell.com