

SOFTWARE UPDATE

AVS Pro

Update (version 17/09) for software

SI Analytics

a **xylem** brand

Update zur Software AVS Pro..... Seite..... 3

Update for software AVS Pro..... Page.....23

TABLE OF CONTENT

PAGE

1	Installation of the software.....	25
2	First launch of the new software	29
3	User administration	31
4	Profile management.....	32
5	Monitoring the security bottle by ViscoPump	33
6	Neue Optionen (Common).....	34
7	New options „PLC settings“	35
8	New settings for the methods	36
9	New settings for the parameters of the ViscoPumps	37
10	Starting measurement up to 3 days delayed	38
11	New settings for the measuring parameters	39
12	New menu extra => Service.....	40

Copyright

© 2018, Xylem Analytics Germany GmbH

Reprinting - even as excerpts - is only allowed with the explicit written authorization.
Printed in Germany.



LAB Online Exhibition



1 Installation of the software

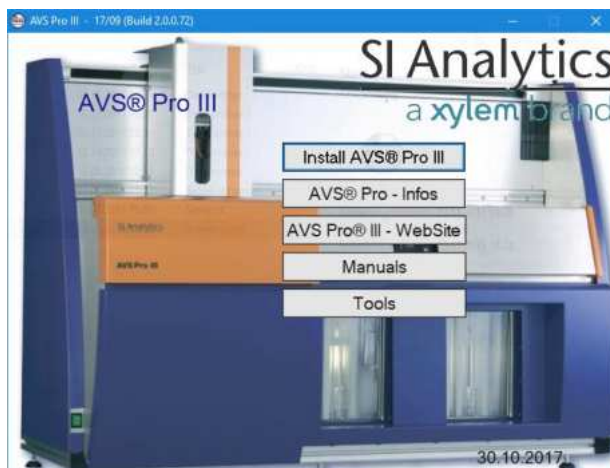
Important notes

- The installation program can be used for a new installation, as well as for the software upgrade of an existing AVS Pro system.
- If the installation program finds an existing AVS Pro software on the PC, the data and settings of the existing version are automatically transferred. If you don't want the automatic transfer, uninstall your existing version completely before installing the new version!
- If the new software should be installed on a new PC and the old software version is less or equal to 11/34, the data and settings can be taken over on the new PC semi automatically in the new software installation. In this case find a detailed description of how to do, on the installation CD in the folder "\Tools\AVSPro migration".

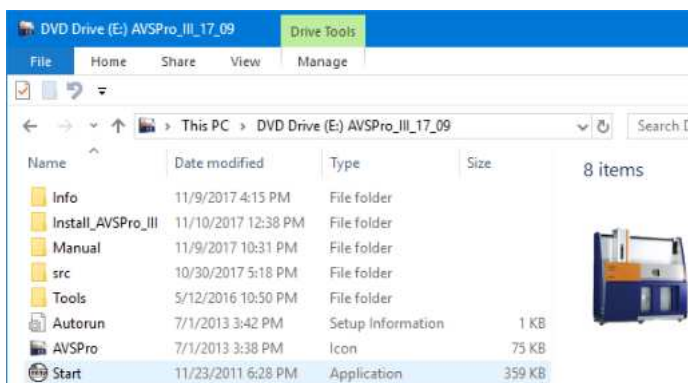
The migration preparation must be done before installing the new software!

(vide separate manual „AVS Pro migration to new PC“)

1. Insert the installation CD-ROM. The following window appears:

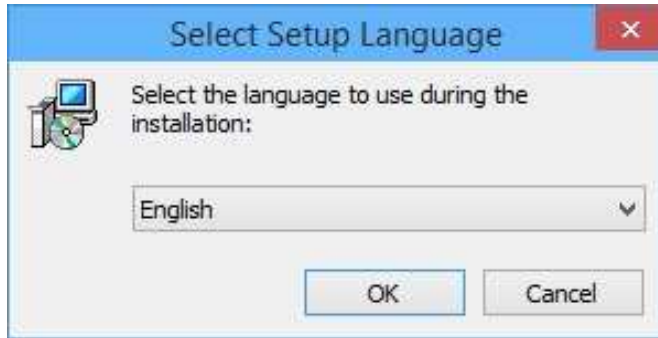


If this window does not appear, you must open the CD drive with a double kick and run the file "Start.exe":

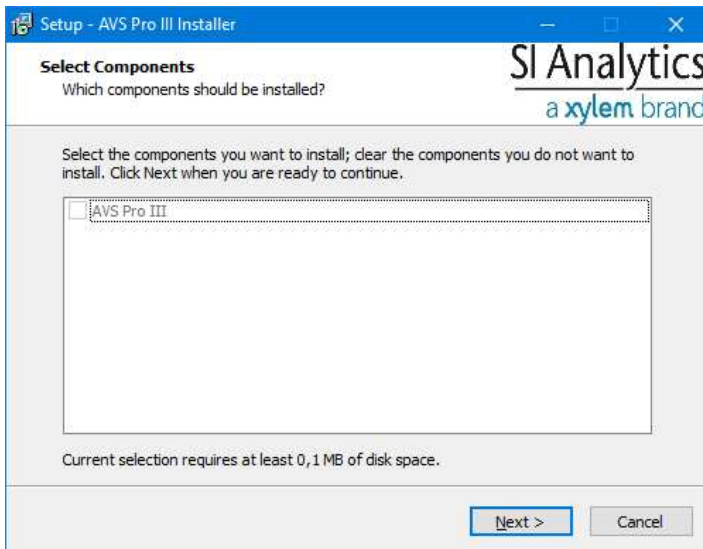


2. Click on "install AVS Pro III" to start the software installation.

In the next window you can choose between English or German:

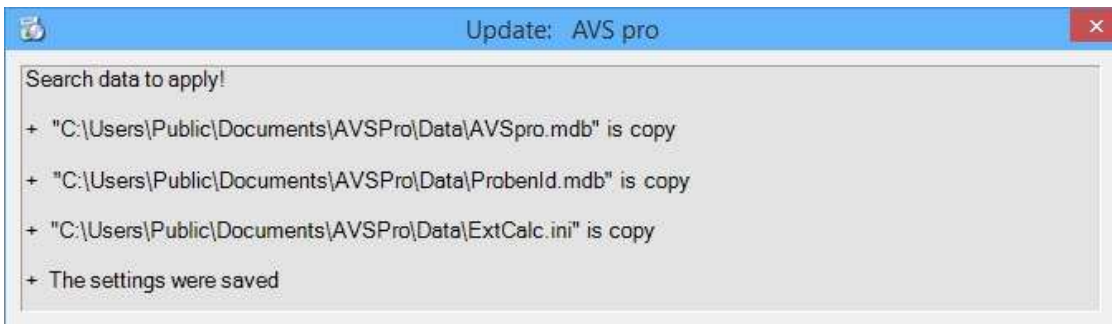


Then simply click "Next":

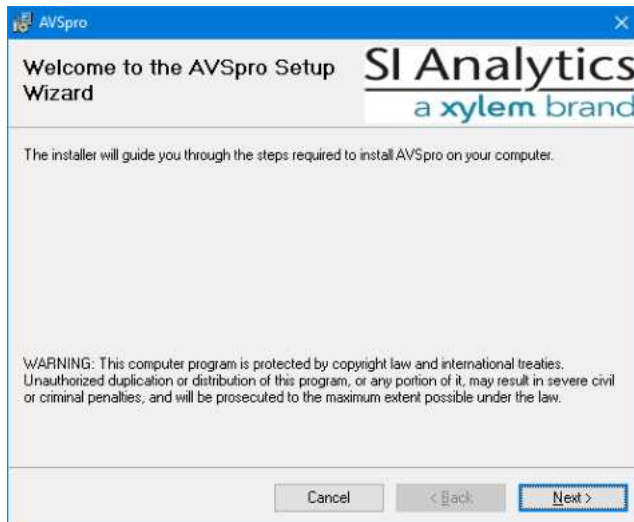


3. If an older installation of the AVSPro software or its data and settings is found on the PC, an automatic backup for the automatic transfer takes place.

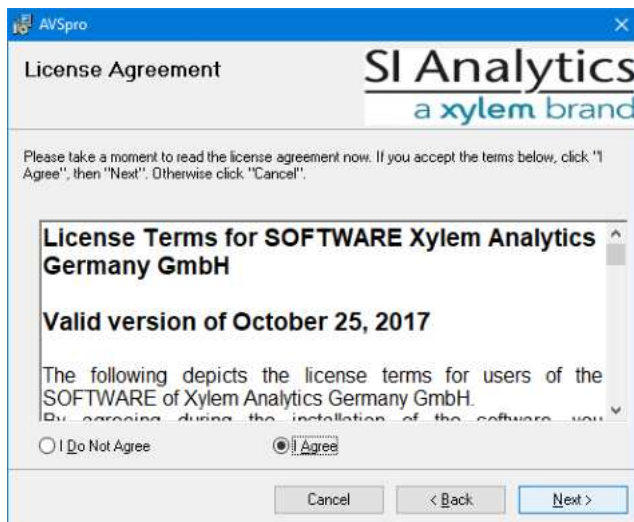
The result of this search will be displayed briefly:



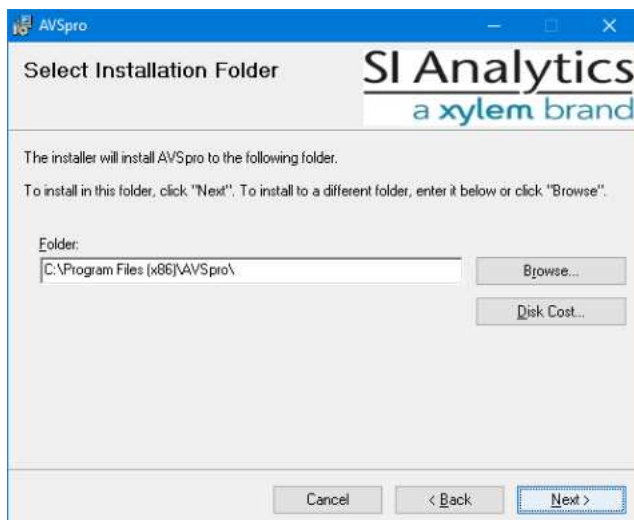
4. Now, the actual Setup Wizard must be started by clicking on "Next":



5. Next, you must agree to the license terms:

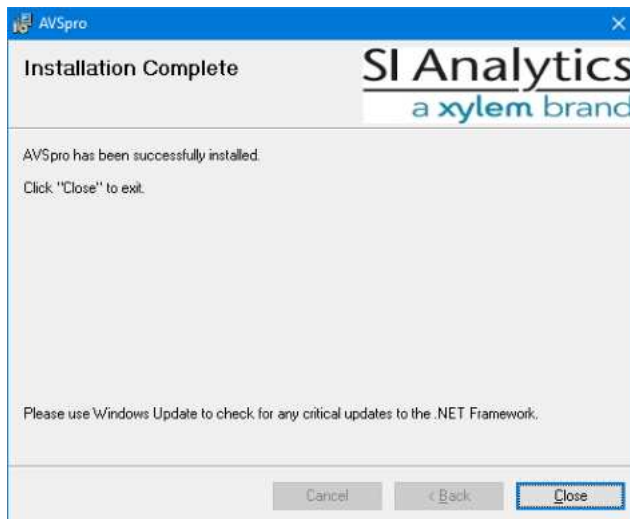
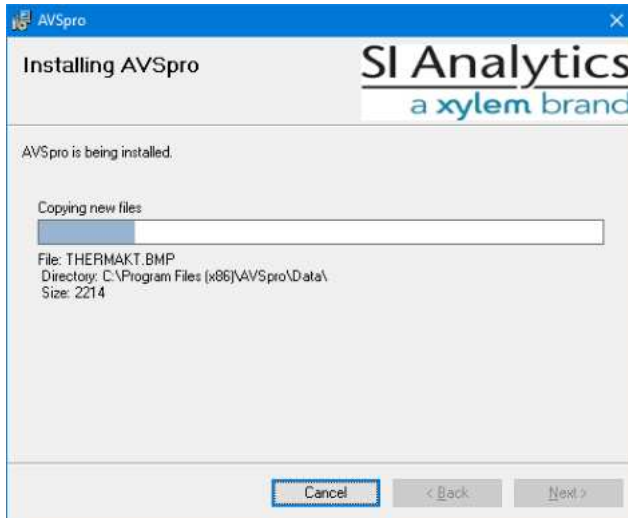


6. It is recommended accepting the installation folder as it is proposed here:



28 Installation of the software

- The installation process now runs automatically and the data & settings saved at the beginning are transferred:



- If the installation has been completed successfully you find two icons on the desktop that can be used to start the software:



2 First launch of the new software

Important notes

- From vers. 13/47 of the AVS Pro software a separate license code is required for the software.
 - The purchased license code also applies to all future versions of the AVS Pro software whose file version number has the same major number (e.g. "2."). Only if the file version start with "3." a new license code is necessary.
 - If you have upgraded from an already licensed version (for example: 13/47), the license information was automatically transferred and will in general not have to be entered again into the system.
1. If no is license information found, the following window appears at your first start of the software:

Enter here

- Serial number
- User information and
- the license code.

You will find this information in the license document.

2. After entering the correct data, a green tick will appear instead of the red cross

Click on the green checkmark to permanently take over the license information!

3. No license scanning is performed from the second launch of the software onward. Instead, the Info window comes up with information of the licensee and the serial number immediately:



4. Then, the password login will appear follow.



5. By default, the administrator has the password "**admin**".

If you have upgraded from a previous version, and have already changed the administrator password, please enter this one. As an "Admin", you have all access rights!

There is also a default user "User" with password "u", which has only restricted access rights.

The password can be switched off for more software launches in the menu "extra". Then the admin account is automatically used.

Refer to the chapter "**User administration**" for more information.

3 User administration

See user administration in the main menu „ **master data** “ => „ **user** “

- User management is only available, if you are logged in as administrator.
- The administrator password can be changed in the user management.
- In the user management users with restricted rights can be created, changed (including password) or deleted.

Overview of how user management works:

	User password: switched on		User password: switched off
Program start	User name and password are asked for. Last user name is already filled in.		No user and no password query Registration is done with user "Admin"
Activate Password query	--		Admin password is queried
Deactivate Password query	Admin password is queried		--
Menu „master data => user“	active		inactive
Logged in as:	Admin	User	(Admin)
User management	<ul style="list-style-type: none"> • Create a user • Set passwords • Change username or password • Delete user 	Access blocked	<u>Not</u> available
Missing menus in the main window			file => new login
Locked menus in the main window		processing => methods... parameters thermostatic extra => options... Profile-Management... use password master data => viscometer user	
Locked menu in the measurement window		processing => ViscoPump parameters... extra => show temperature warnings rinsing ViscoPump active mode blow out capillary Speed mode	
Locked menu options in the window "devices connected"		file => search extra => dosing parameters	

4 Profile management

See profile management in the main menu **"extra" => "Profile Management..."**

- If the settings of the software must be modified for different applications, you can save these changes with the profile management. You can then quickly and easily switch back and forth between the different settings.
- The respective profile stores all settings relevant to the measuring sequence such as rack size, solvent, rinse mode, sample label, ViscoPump/dosing parameter etc.

The default profile is called "Default" and can be renamed at any time.



The name of the currently used profile is displayed in the header bar of the program window:



Optionally, you can select the profile to use to at each program start. For this, insert the tick at "Select a profile at startup". If this tick is not set, the program automatically starts with the profile used last.

Create a new profile

- Copy an existing profile, such as the "Default"-profile.
- Give the new profile a name with a meaning to really.
- Select the new profile and activate it using the button "Enable".
- Make all relevant changes to the settings for this new profile.

Change profile

- You can change the profile to be used without restarting the program.

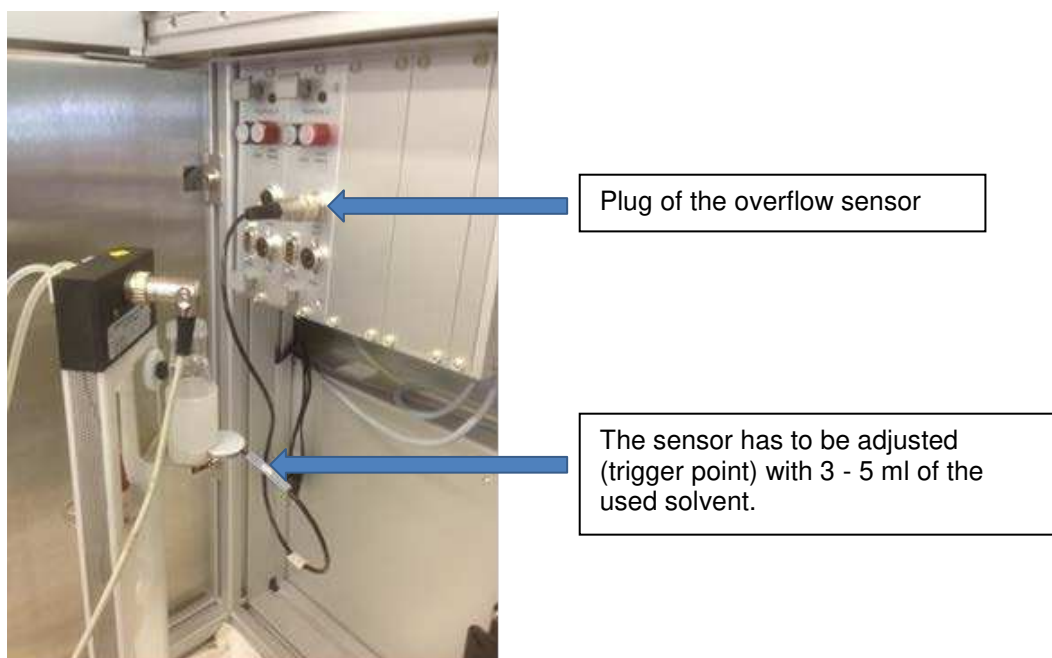
Delete profile

- The current profile cannot be deleted. To delete a profile you need to activate a different profile
- You cannot delete the default profile (ID 00).

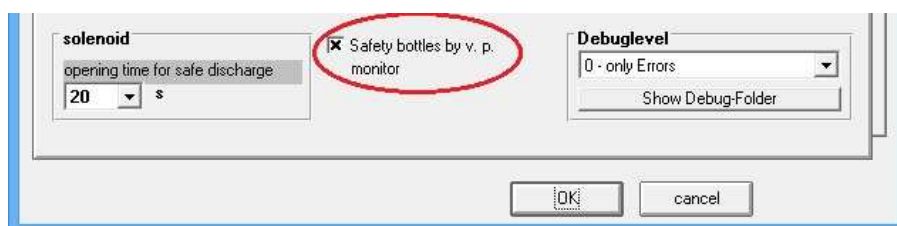
5 Monitoring the security bottle by ViscoPump

Important note

- If your AVS Pro system is equipped with ViscoPumps type II (VZ 8511) or type III (VZ 8561), safety bottles can be monitored directly by the respective ViscoPump.
1. Connect the plug of the overflow sensor (VZ 8552) with the socket of the corresponding ViscoPump:



2. **Main menu: extra => options... => common**
Select the option "Safety bottles by v.p monitor"



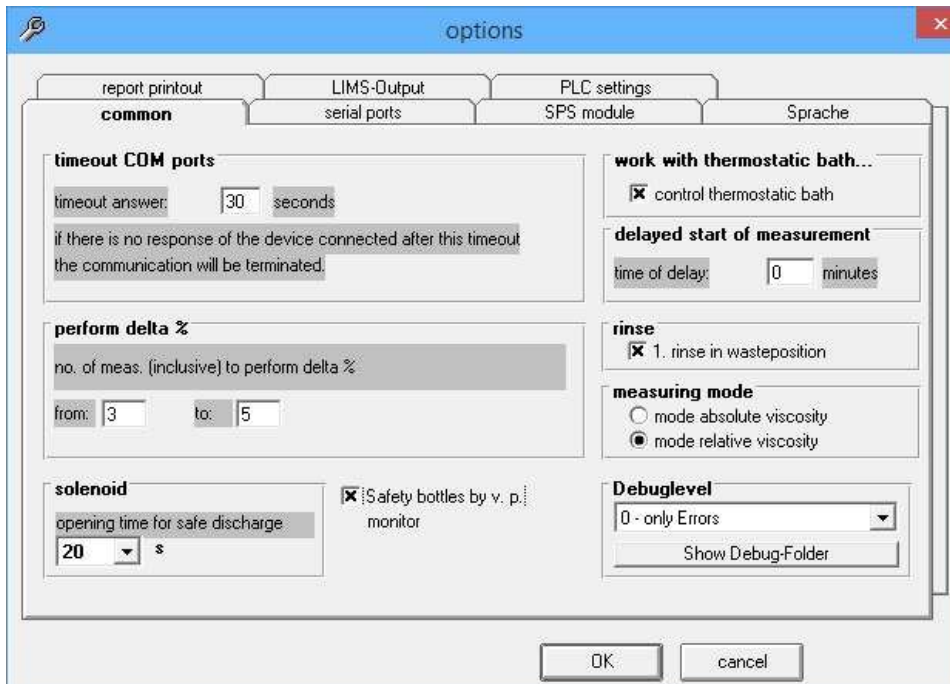
3. If solvent is in the safety device VZ 8552 and the sensor has been activated you will get this message:



Empty the safety bottle and re-enable the ViscoPump affected.
(Menu: "processing => viscometer connected ...")

6 Neue Optionen (Common)

Main menü „extras“ => „optionen...“ => „common“



„1. Rinse in wasteposition“

- from the version 10/48 is onward.

„Opening time for safe discharge“

- can since version 12/50 be programmed.

„Debug level“

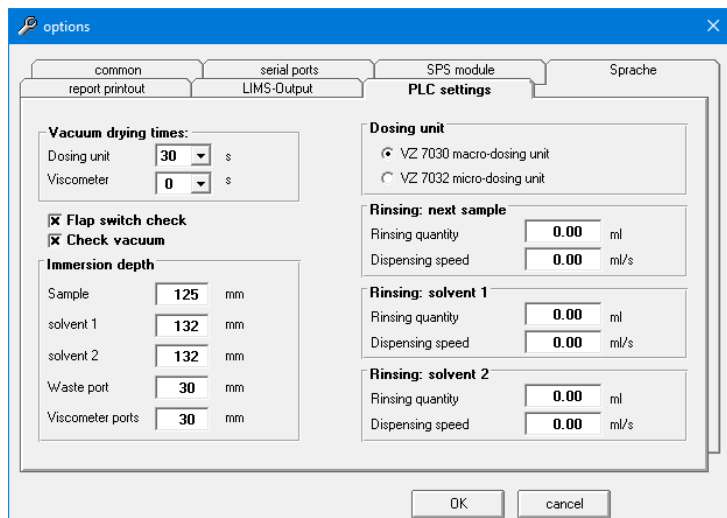
- In consultation with the support a debug level can be used for problem analysis in case of error may. When a debug level is > 0 the communication between PC and machine logged in text files. The log files can be accessed via the button "Show Debug-Folder".

„Safety bottles by v.p. monitor“

- is available since version 13/05, for more details refer to chapter "**Monitoring the security bottle by "**

7 New options „PLC settings“

Main menü „extras“ => „options...“ => „PLC settings“



„Rinsing next sample“

- Here values for the rinsing with the next sample can be pre-defined, which differ from the values used for the actual measurement.
- When the values entered here are the defined input of 0.00, the same values are used for rinsing the sample as for the measurement of the sample. In this case defined the values from main menu it will apply:
 „processing“ => „viscometer connected...“ => „extra“ => „dosing parameters“.

„Rinsing: solvent 1“, „Rinsing: solvent 2“

- Specifications for the rinsing with external fluids.

„Vacuum drying times“ (Only for AVS Pro III !)

- When using the rinse mode Vacuum drying the drying time for the metering module determines, how long the dispensing module has to stay in the dry port. The drying time for the viscometer determines the minimum pumping time of ViscoPumpe when rinsing with solvent. It only works if Vacuum drying is specified as next step of rinsing.

„Flap switch check“

- This option specify, whether the sample room door safety switch should be checked when the program starts.

„Check vacuum“

- This option specify, whether the vacuum of the waste system should be checked when the program starts.
(This only applies to AVS Pro I with VZ 71xx vacuum pumps!)

„Immerision depth“

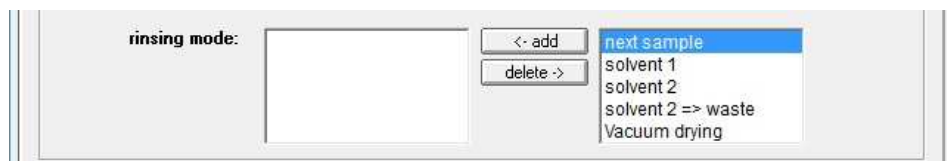
- Here, the respective Immerision depths of the sample needle is specied. For the vials VZ 7080 and VZ 7081 a depth of 125 mm should be set.

„Dosing unit“

- For the quantity data to be taken into account correctly, if using a micro-dosing unit VZ 7032, please change dosing unit settings here.

8 New settings for the methods

Main menü „processing“ => „methods...“



„Rinsing mode“

- **„solvent 2 => waste“**
In this rinse only the dosing unit is rinse with external solvent 2 and the solvent is then emptied into the waste position.
- **„Vacuum Drying“**
This rinsing step can be used after wash with a solvent for intensive drying of the dosing unit. The dispensing needle is insert in to the dry port for the time defined in the options.



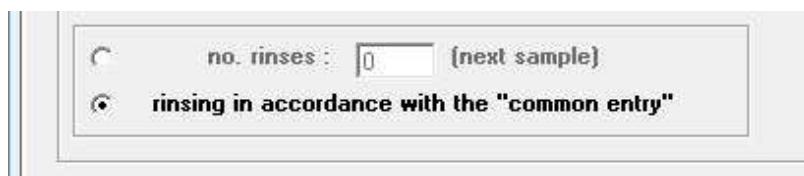
„Use ViscoPumps parameters“

- Both **"common entry"**, as well as **"individual entry"** now allow for the possibility that the ViscoPump parameters are used per ViscoPump. The corresponding parameters can be on the menu in this dialog **"processing" => "ViscoPump parameters..."**.



„Common input “

- The **"common input"** can now take place separately for two groups of ViscoPumps. That is interesting, for example, if two thermostatic baths with different temperatures are used.

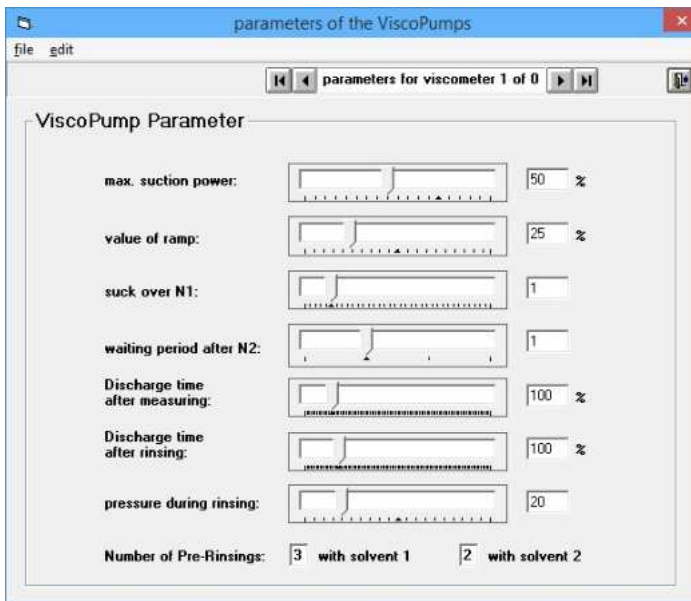


„Rinsing determination of t0-flowtime“

- On the **"t0-flowtime"** tab there is now the option to adapt the rinse mode, as programmed in the **"common entry"**.
(This option is only available with the "AVS Pro III"!)

9 New settings for the parameters of the ViscoPump

Main menu „processing“ => „methods...“ => menu „processing“ => „ViscoPump parameters...“



„Discharge times“

- from vers. 13/03 an different times for the discharging can be set according to a measurement or after rinsing

„Parameters for“

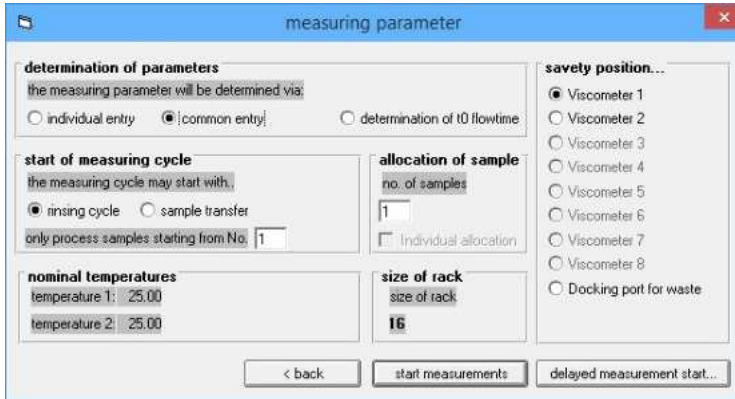
- So far, values per sample, could be set here for the "**common entry**" and the "**determination of t0-flowtime**".
- As of version 13/26 there is the possibility of defining your own always for each ViscoPump. In the dialog "**selection of methods**" you can choose whether to use the values for ViscoPump or the values per sample or "**common entry**" is determined.

„Number pf Pre-Rinsing“

- This option is available from vers. 14/12 on.
- Pre-rinsing refers to the multiple high pumping of the solvent in the ViscoPump at a wash cycle before it is again sucked.

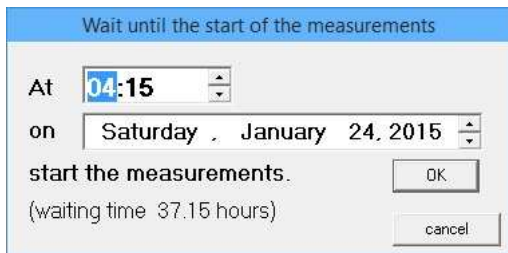
10 Starting measurement up to 3 days delayed

- As of version 13/40, there is the possibility of starting of measurement up to 3 days delayed.



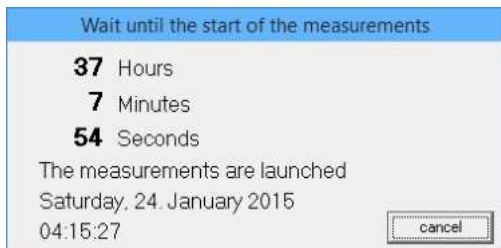
Thus a series of measurements can be prepared for example already on Friday, which then automatically starts on Monday morning.

- After activating the button "**delayed measurement start...**" the following dialog appears:



Set the desired time to start here and then click "**OK**". Press "**cancel**" to return to the measurement parameters..

- Before the actual start of measurement, this dialog will be shown:



Waiting there can be canceled however at any time with the button "**Cancel**" to the measurement parameters, brings you back.

Important note

The delayed mess start option exists regardless of the setting in "**delayed start of measurement**" in the common options. The adjustable time a maximum of 300 minutes (5 hours) and a applies with each starting is of the measurements.

11 New settings for the measuring parameters

In the measurement parameters there are 2 new setting options

The screenshot shows the 'measuring parameter' configuration window. The 'Emptying viscometer' section has a checked box for 'Before each sample'. The 'Needle park position' section has a checked box for 'At the end of the series park in waste position'. Other visible settings include 'determination of parameters' (common entry selected), 'start of measuring cycle' (rinsing cycle selected), 'nominal temperatures' (25.00), 'allocation of sample' (no. of samples: 1), 'size of rack' (size of rack: 16), and 'safety position...' (Viscometer 1 selected).

„Emptying viscometer“

- The setting "Before each sample" is used to set an additional emptying of the viscometer.
- For each first sample of each viscometer, this additional suction is suppressed because a safety drain has just been carried out before.

„Needle park position“ (Only for AVS Pro II + III !)

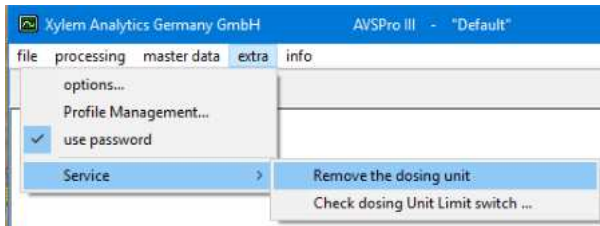
- This setting can be used to specify that, for safety reasons, the dosing unit is parked with the needle in the waste position after the completion of a series of measuring.
- This setting option is only available if the MCM version 20171006 or higher has been installed.



The MCM Firmware uploader program is available on the Setup CD to update the MCM version.

12 New menu extra => Service

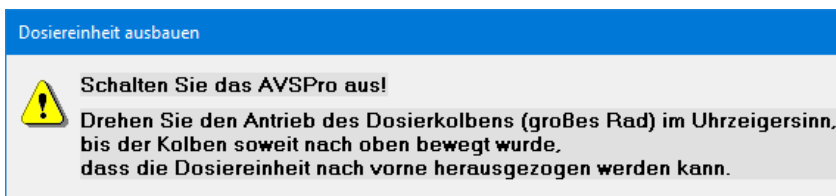
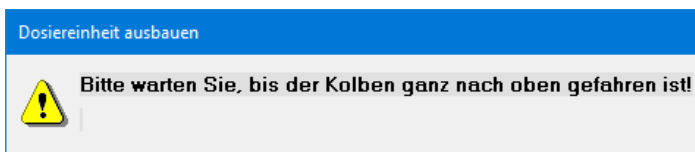
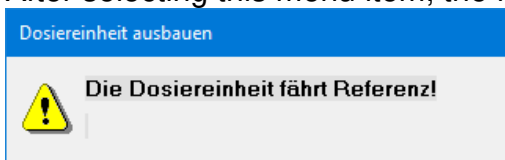
In the main menu under "extra" => "Service" There are now 2 new menu items:



- Applies only to AVSPro II und III !
- These menu items are only available if you are logged in as administrator.

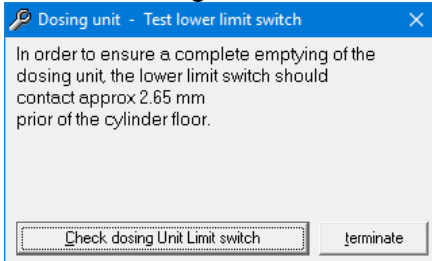
„Remove the dosing unit“

- This menu item supports the removal or change of the dosing unit and replaces the additional software AVSPro RDU (Remove Dosing Unit) which used to be necessary previously.
- After selecting this menu item, the following windows are displayed:

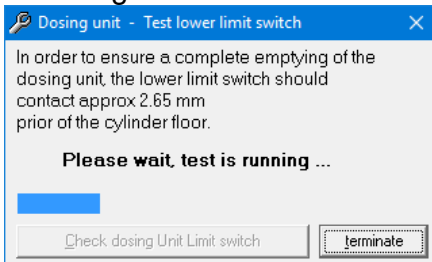


„Check dosing Unit Limit switch ...“

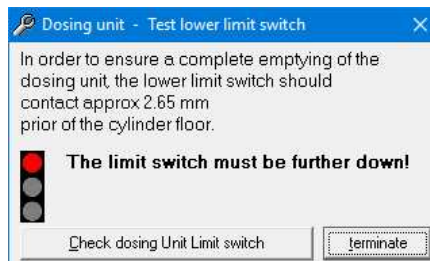
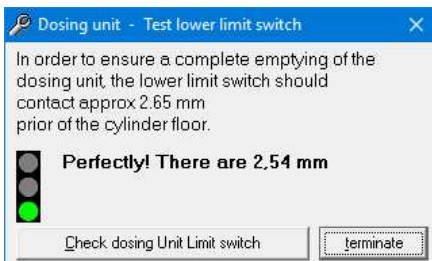
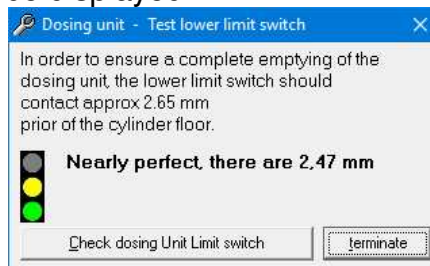
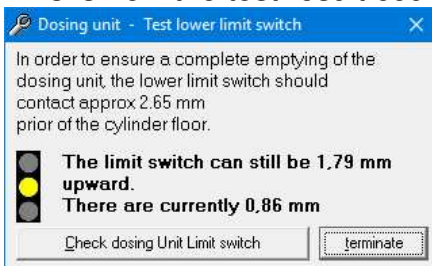
- This menu item is only available if the MCM version 20170919 or higher has been installed.
- This menu item can be used to check the optimal setting of the lower limit switch of the dosing unit.
A complete emptying of the dosing unit can only be ensured if the lower limit switch of the dosing unit is optimally adjusted.
- After selecting this menu item, the following dialog appears:



- After you click on the "Check dosing Unit Limit switch" button, you will first see the following:



- This is how the test result could be displayed:



SI Analytics

a xylem brand

Hersteller

(Manufacturer)

Xylem Analytics Germany GmbH

Dr.-Karl-Slevogt-Str.1

82362 Weilheim

Germany

SI Analytics

Tel. +49(0)6131.66.5111

Fax. +49(0)6131.66.5001

E-Mail: si-analytics@xyleminc.com

www.si-analytics.com

Service und Rücksendungen

(Service and Returns)

Xylem Analytics Germany Sales GmbH & Co.KG

SI Analytics

Gebäude G12, Tor Rheinallee 145

55122 Mainz

Deutschland, Germany

Tel. +49(0)6131.66.5042

Fax. +49(0)6131.66.5105

E-Mail: Service-Instruments.si-analytics@xyleminc.com